



MEMPHIS BROWNFIELD COALITION

ADVISORY COUNCIL
THURSDAY 9/24/24
5:00 PM

CRA
Gould Cottage
850 N. Manassas St
Memphis, TN 38107

Agenda & Housekeeping:

Please sign in on the Sign-In Sheet, Name Tags

Call Meeting to Order

Updates from Grantees

Questions & Public Comment After Updates

Brownfields Workshop led by NJIT

Introduction

In 2022, organizations gathered for a Brownfield informational session presented by TDEC, ICMA, and TWI. The Memphis Brownfield Coalition was subsequently formed to support applications for EPA Brownfield Grants.

The Advisory Council was formed and consists of a group of stakeholders from across the City of Memphis and Shelby County that convenes quarterly to discuss the progress of grant activities and potential brownfield redevelopment. The Council consists of representatives from quasi-governmental agencies, city/county/state departments, neighborhood associations, private developers, technical assistance providers, and community focused non-profits.

The goals of the council are to assist with **inventory efforts**, **network with communities** throughout the city, and inform and **engage in the overall brownfield assessment and redevelopment process**. The council may also propose projects for involvement in the grant program.

EPA Grants Awarded

In 2023, two brownfield grants awarded by Environmental Protection Agency (EPA).

Revolving Loan Fund (RLF)

- \$1,000,000 awarded to Economic & Development Growth Engine (EDGE)

Coalition Assessment Grant

- \$1,000,000 awarded to City of Memphis & Shelby County Community Redevelopment Agency (CRA)



Revolving Loan Fund Updates

- Contracting with BRS for grant management
- Policies and Procedures
- First Drawdown Completed
- Attended Brownfield Summit in Portland, Maine
- Currently working on first round of reports

Stay tuned for more soon!



Assessment Grant Updates

Task 1

Project Management / Compliance & Reporting

CRA is in compliance and completing regularly quarterly reports.

Still waiting on EPA to comment, revise, and approve Generic QAPP.

Task 2

Community Involvement & Engagement

Quarterly meetings are going well. A boost in attendance would be welcome.

Invitations to politicians and developers (public, non-profit, private).

Task 3

Site Identification & Assessments

Phase I ESA has been ordered on site at 2nd & Chelsea. Report will be shared once completed.

Updated guidance from EPA, requesting Phase I ESA completed in conjunction with eligibility forms.

Task 4

Cleanup Planning & VOAP

Not to this stage yet. 2025 & 2026

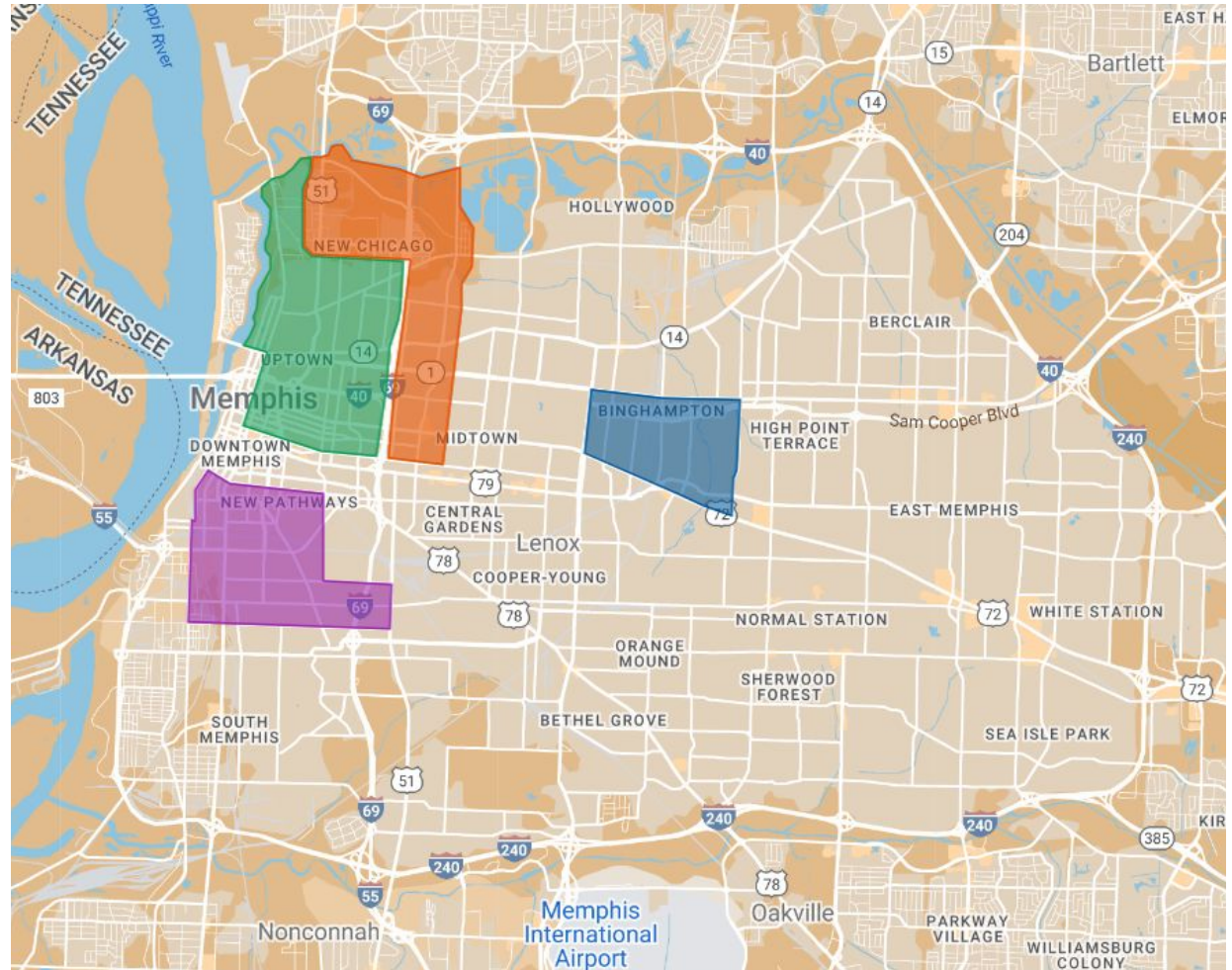
Assessment Grant Target Areas

Uptown
Redevelopment Area

Klondike,
New Chicago,
North Memphis
Industrial Area

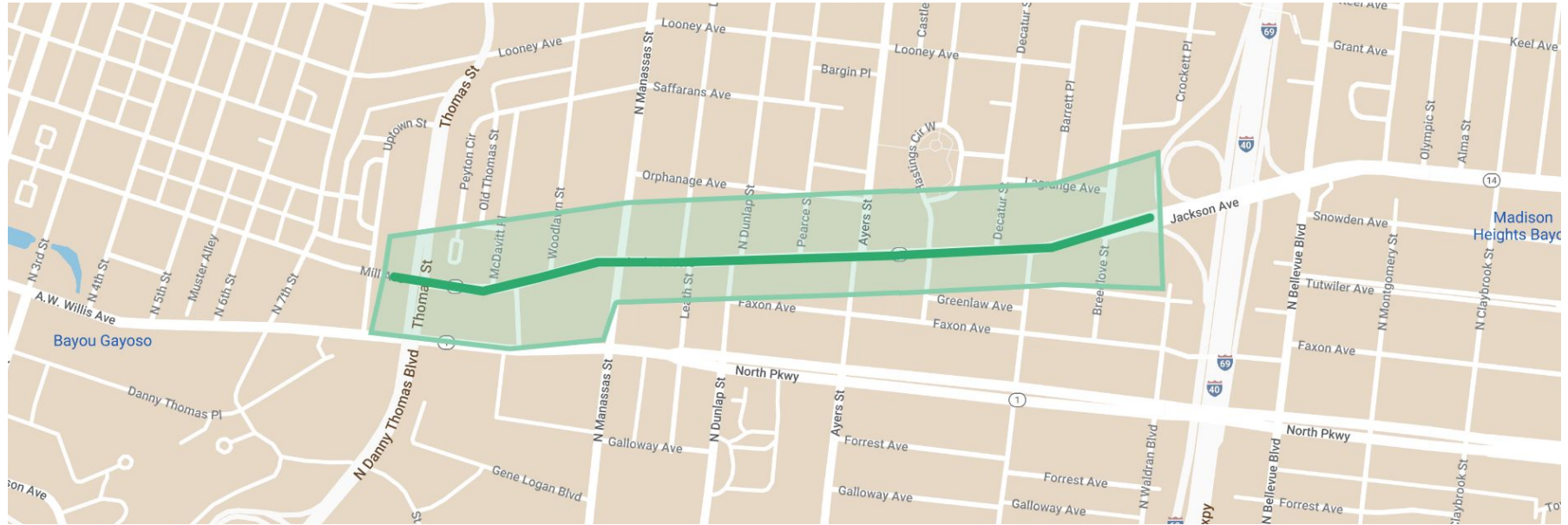
Binghampton

Soulsville/SouthCity



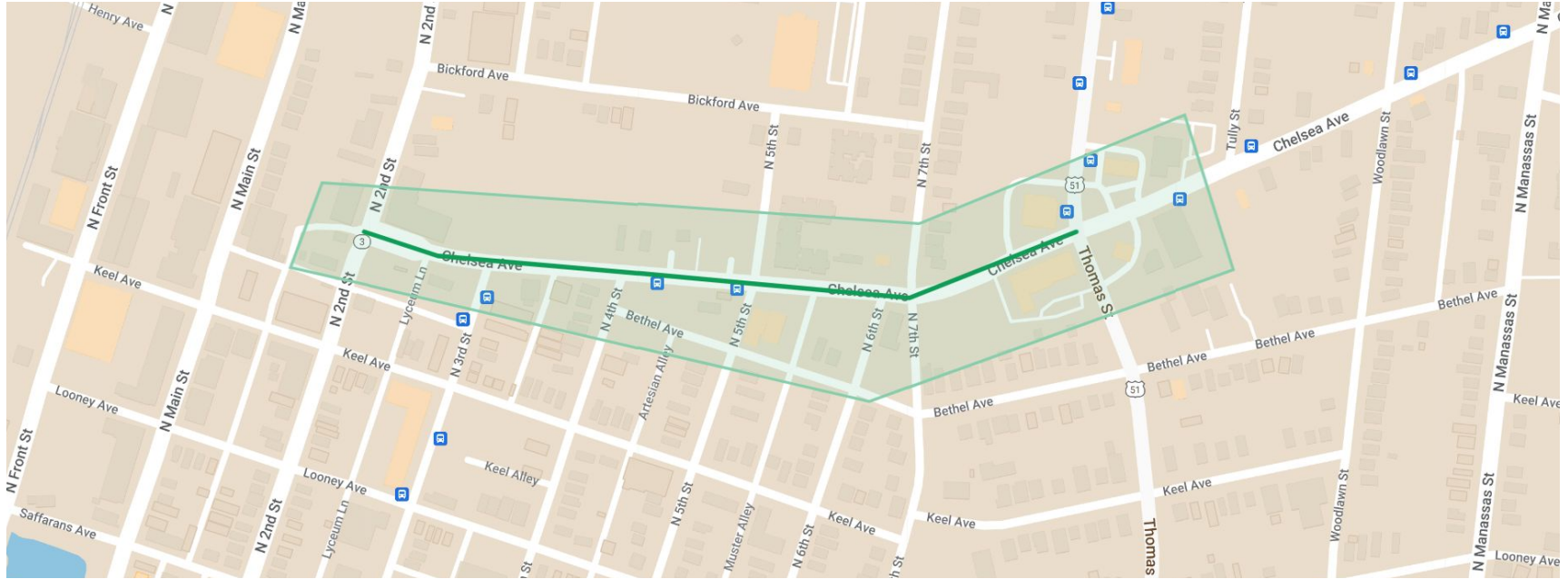
Jackson Corridor West

Danny Thomas to I-240



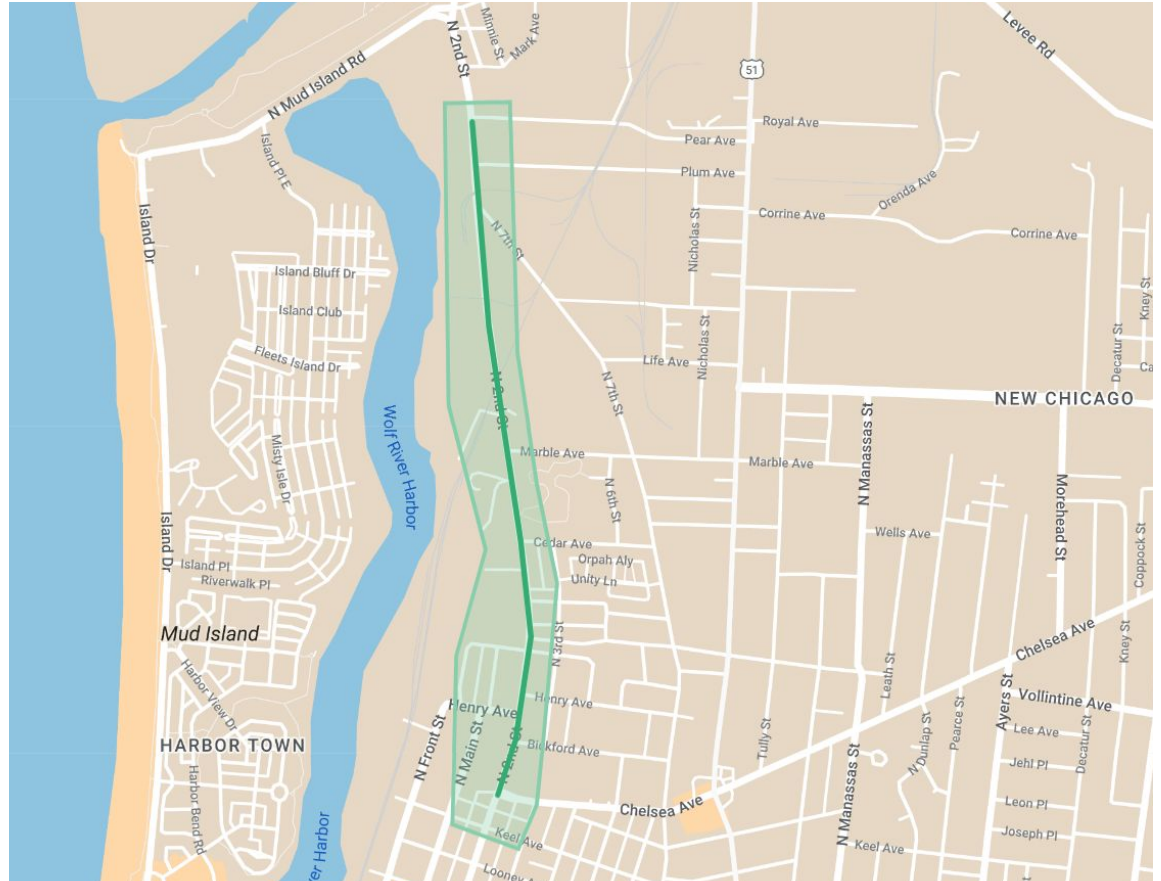
Accelerate Anchor Chelsea & Thomas St

Chelsea Ave Corridor



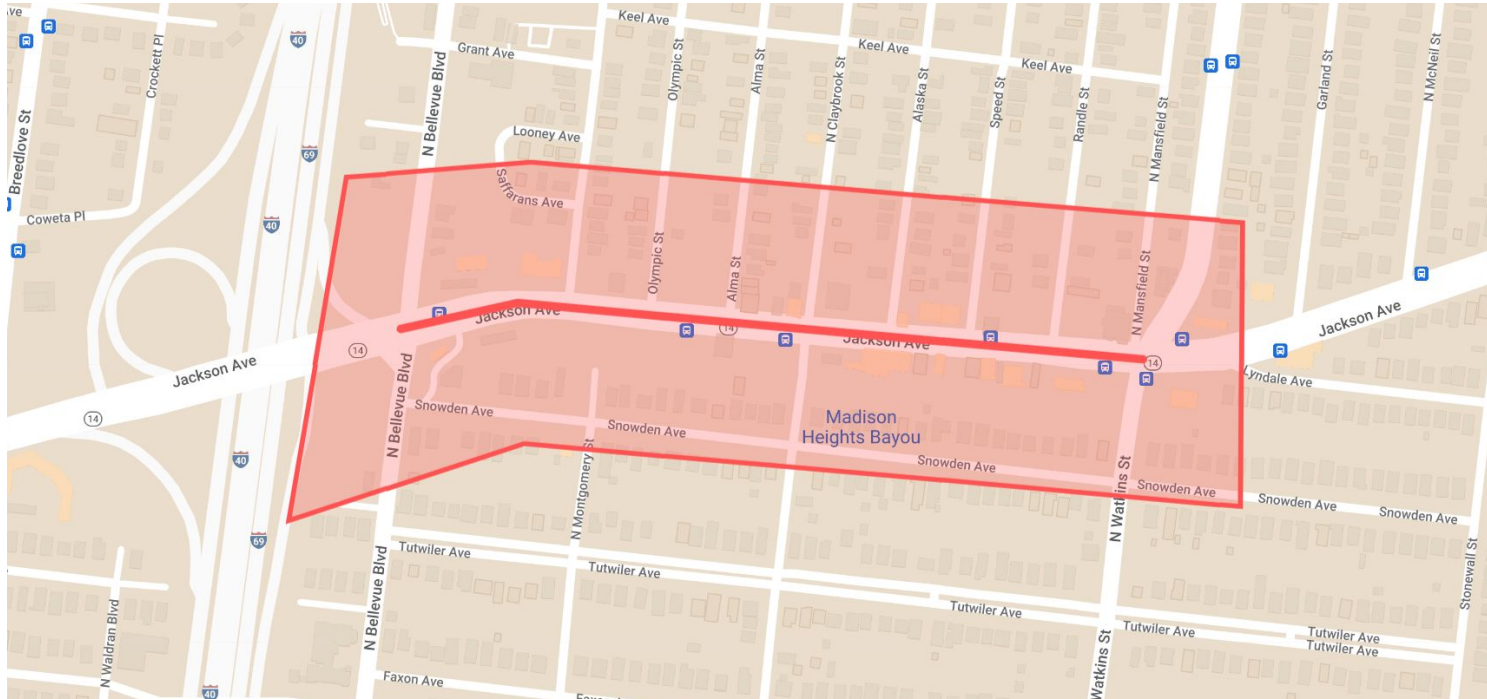
2nd Street Corridor

Chelsea to Pear



Jackson Corridor East

I-240 to Watkins

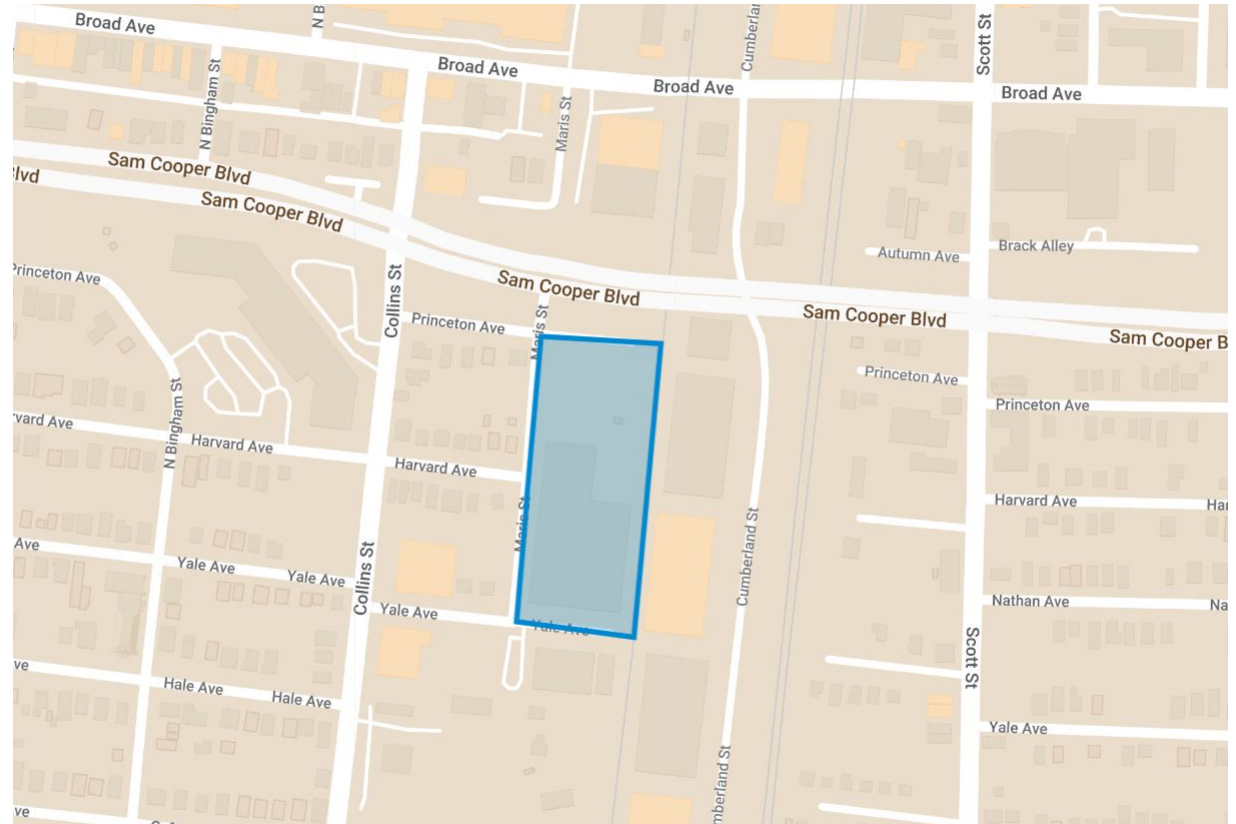


Lick Creek

I-240 to Watkins

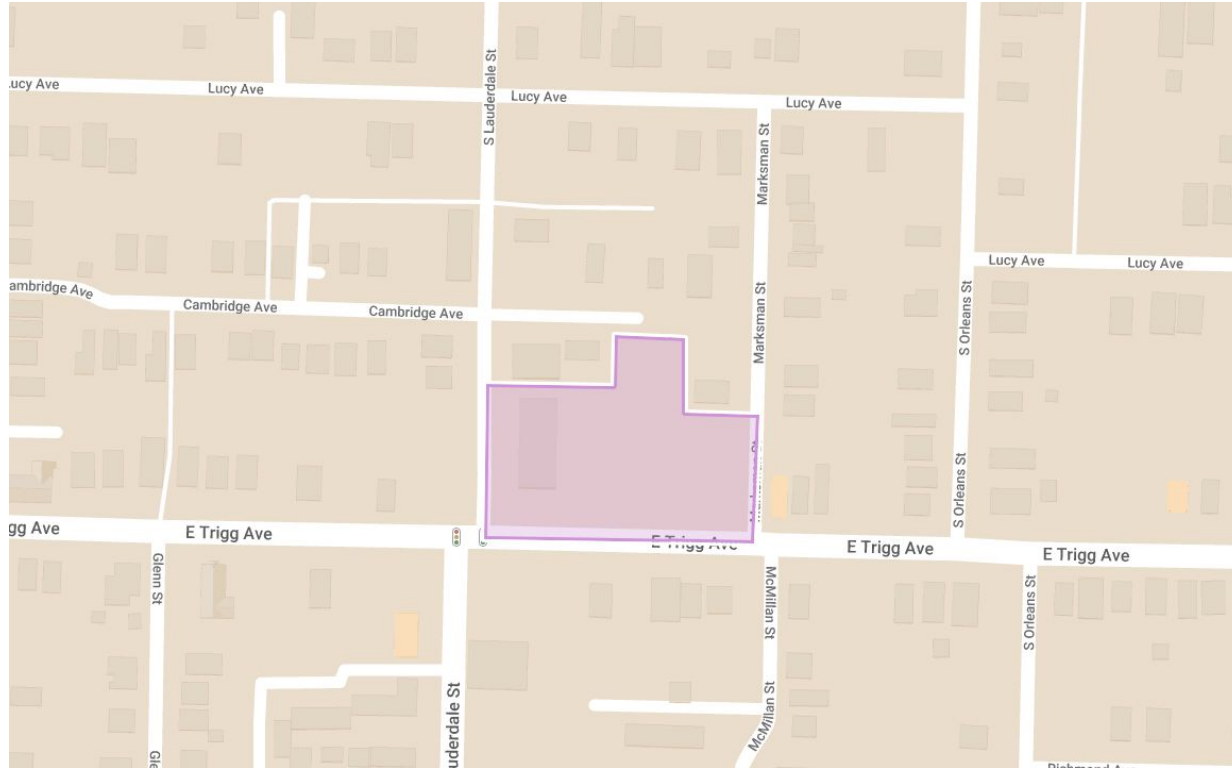


2690 Yale Ave BDC Business Hub



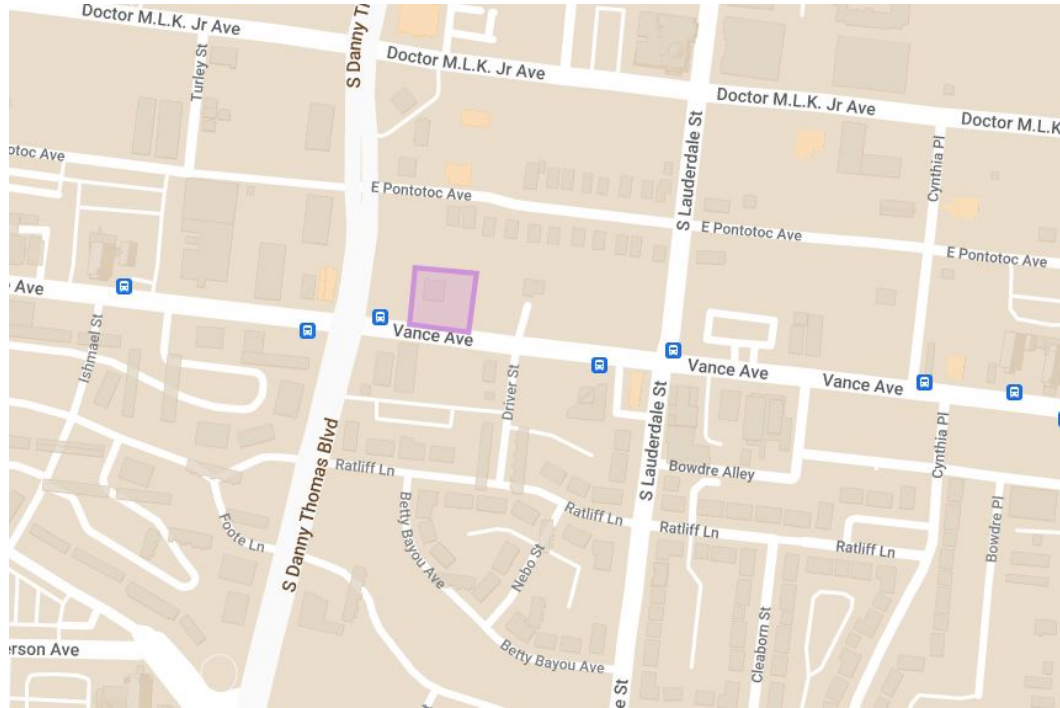
560 E. Trigg St

St. Thomas Catholic Church



492 Vance Ave

Griggs Academy



Community Involvement & Engagement

Points of Contact

Emma Turri 901-435-6992 x 215
emma.turri@cramemphis.org

Vivian Ekstrom 901-435-6992 x 219
vivian.ekstrom@cramemphis.org

Brownfield Coordinators Community Liaisons

Uptown Redevelopment Area

- CRA, Emma Turri
- Felicia Lloyd

Klondike & North Memphis Industrial Area

- Klondike Smokey City CDC, Dr. Eziza Ogbeiwi-Risher
- Joyce Grimes

Binghampton

- Binghampton Development Corporation, Andy Kizzee
- Elizabeth (Liz) Gibson

Soulsville & South City

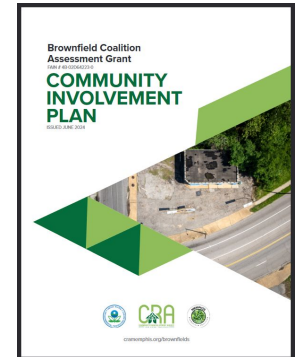
- Soulsville Foundation, Josh Swiatek
- Ben Ivy

Community Involvement Plan (CIP)

The CIP will be updated twice a year.

Includes information about:

- The grantees and target areas
- A plan of how, when, and where the CRA intends to engage with the public
- Glossary of terms & acronyms used frequently in discussions about the grant and environmental assessments
- Contact information



Soulsville Foundation: Creation and deployment of a new Environmental Justice Curriculum for teens as a one-school pilot project. Promotion of EJ curriculum for replication elsewhere in the Memphis community.



Environmental justice (EJ) is the fair treatment and meaningful involvement of all people regardless of race, color, national origin, or income with respect to the development, implementation and enforcement of environmental laws, regulations and policies. Meaningful involvement means:

- People have an opportunity to participate in decisions about activities that may affect their environment and/or health;
- The public's contribution can influence the regulatory agency's decision;
- Decision makers will seek out and facilitate the involvement of those potentially affected; and
- Community concerns will be considered in the decision making process.

The Works, Inc.: Meeting facilitation

- Maintaining and preparing invites, agendas, minutes
- Coordinating locations, reserving rooms, setup for meetings



Submit Potential Brownfield Sites for Consideration and Inventory:

<https://cramemphis.org/brownfields/>

Want to submit a potential Brownfield site to the Coalition?

Brownfield Contact Form

Fields marked with an * are required

Your Name / Organization / Agency *

Email Address *

Address of Site for Consideration *

Message (e.g. historic land use, upcoming development, any assessments or cleanup completed previously) *

Submit

Questions

Next Advisory Council Meeting

December 2024

Time & Location: TBD

Binghampton Target Area

Contacts



CRA

Emma Turri <emma.turri@cramemphis.org>
901-435-6992



EDGE

Jessica Aytchan <Jaytchan@edgemem.com>
901-341-2114



TWI

Eric Story Neimeyer <eric@theworkscdc.org>
901-946-9675