



**MEMPHIS
BROWNFIELD COALITION**

ADVISORY COUNCIL
THURSDAY 9/14/23
2:30 PM

Varsity Spirit Conference Room
711 N Front St Suite 100
Memphis, TN 38107

What is a Brownfield?

As defined by the United States Environmental Protection Agency (EPA):

A brownfield is a property, the expansion, redevelopment, or reuse of which may be complicated by the presence or potential presence of a hazardous substance, pollutant, or contaminant.

Many commercial, industrial and even some residential properties may be environmentally contaminated due to past uses at the site.



Brownfield Assessment Coalition Grant

- Lead Applicant: CRA
- Partner Applicants: Binghampton Development Corporation, Klondike Smokey City CDC, and Soulsville Foundation
- Total of \$1,000,000
- To be used to:
 - Perform Phase 1 & Phase 2 Environmental Assessments
 - Create Remediation Plans
 - Prepare Sites for Cleanup and/or Development

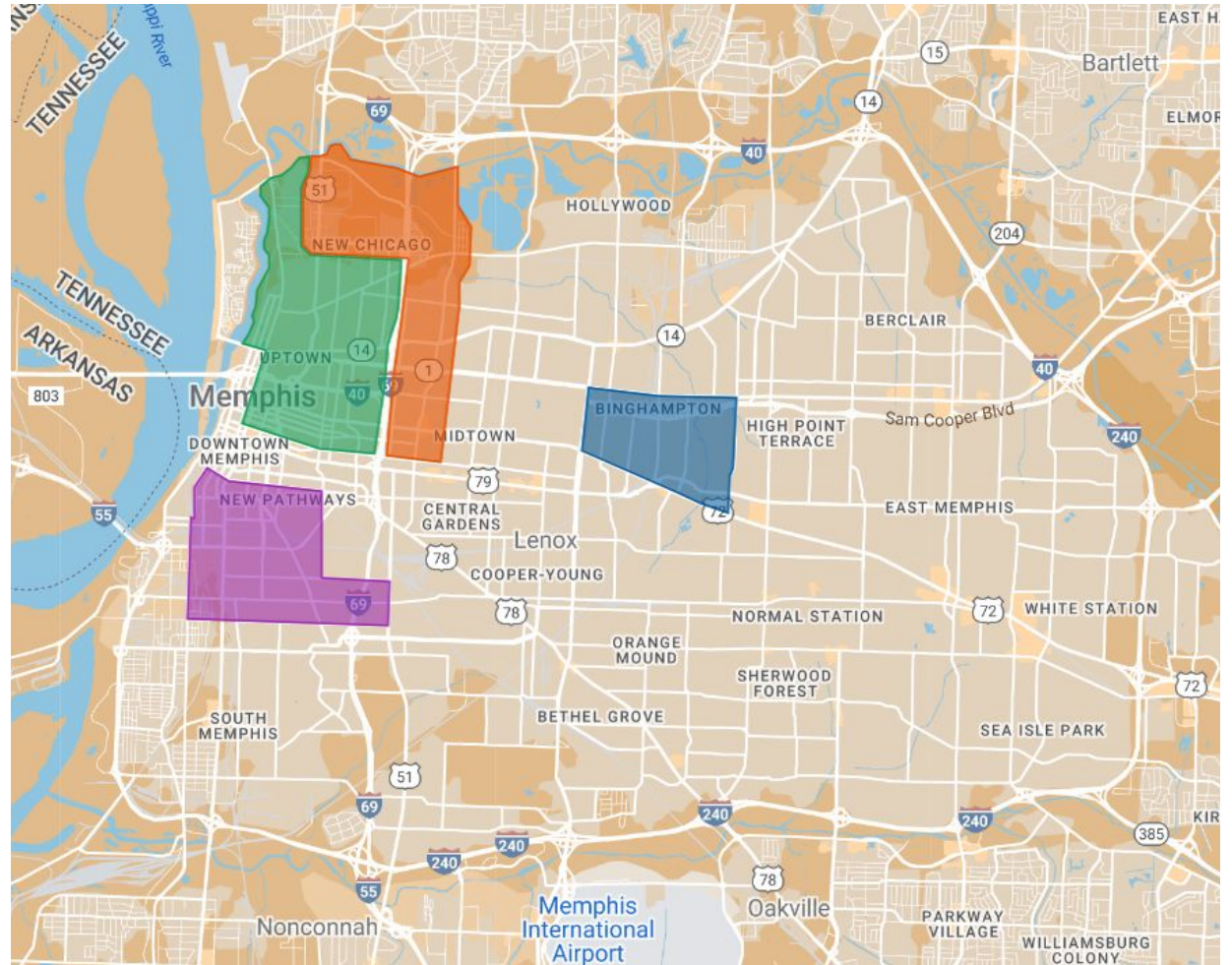
Target Areas

Uptown
Redevelopment Area

Klondike,
New Chicago,
North Memphis
Industrial Area

Binghampton

Soulsville



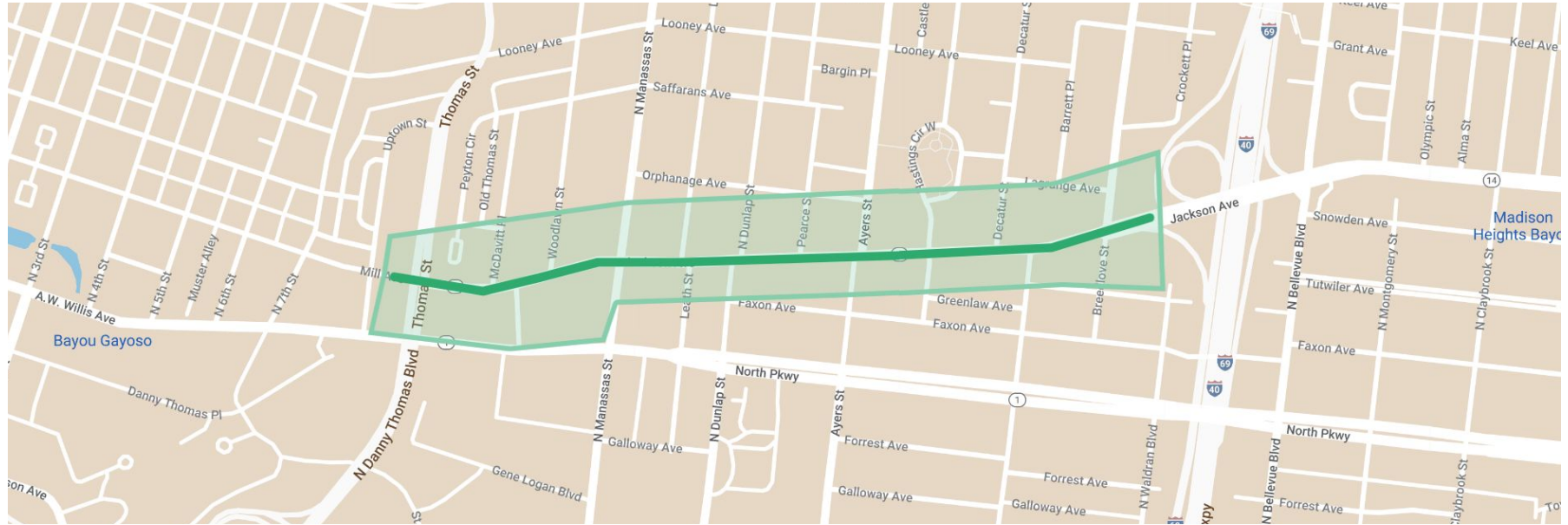
PRIORITY SITES

Corridors, clusters of parcels, and individual parcels identified during the grant application process and formation of the coalition Summer of 2022.

Assessments require CRA to either have ownership, site control, or permission from the owner to access the site.

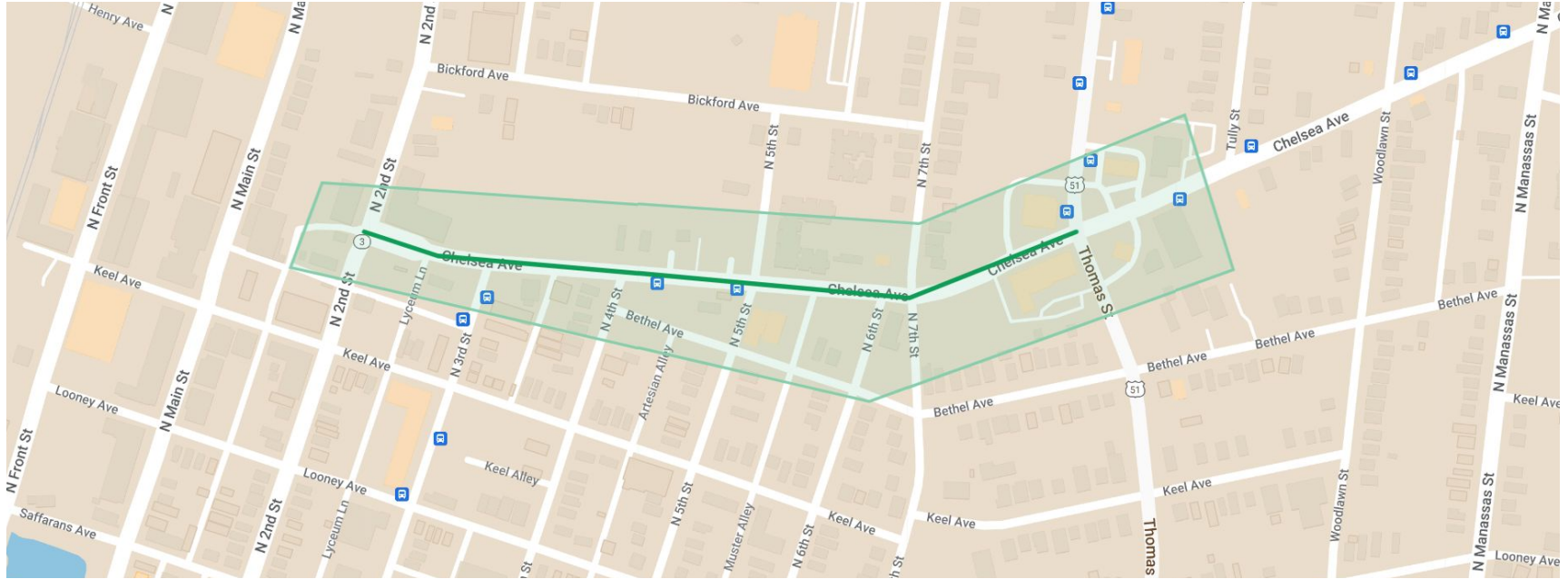
Jackson Corridor West

Danny Thomas to I-240



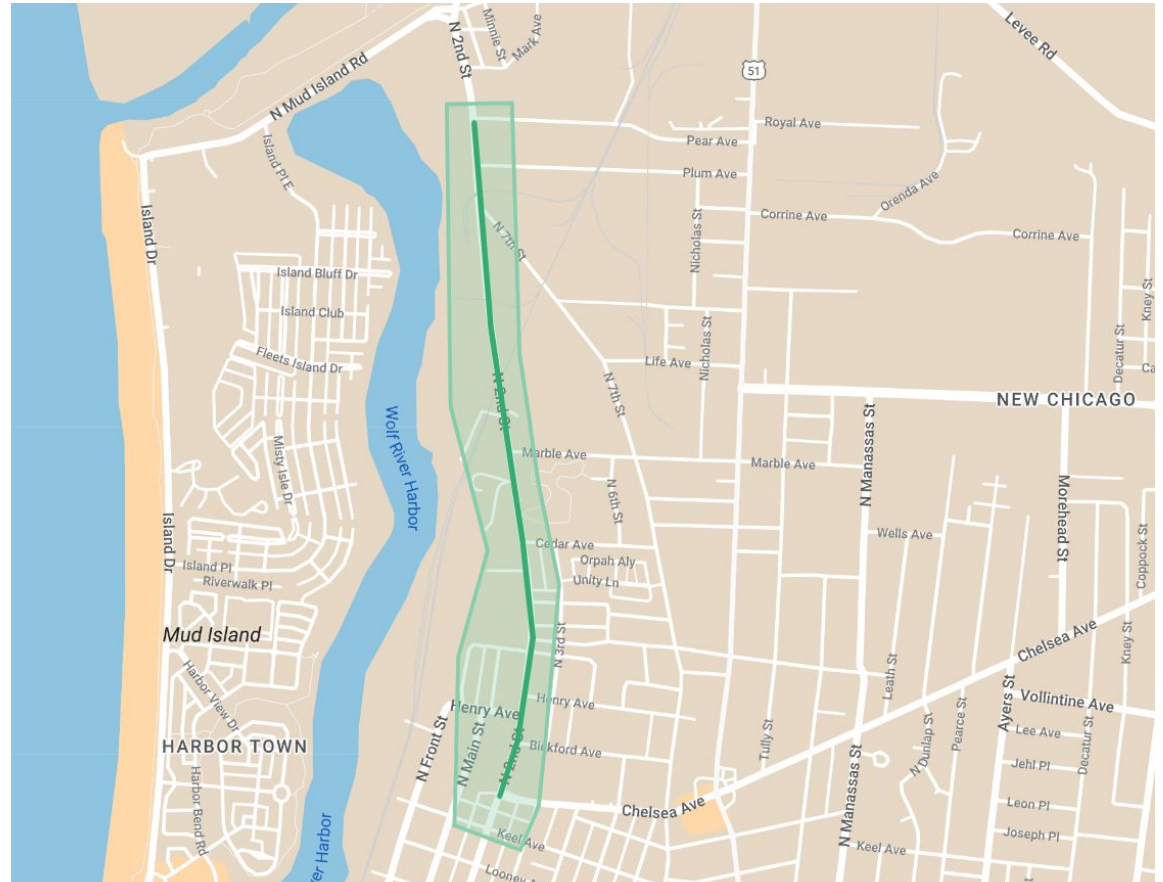
Accelerate Anchor Chelsea & Thomas St

Chelsea Ave Corridor



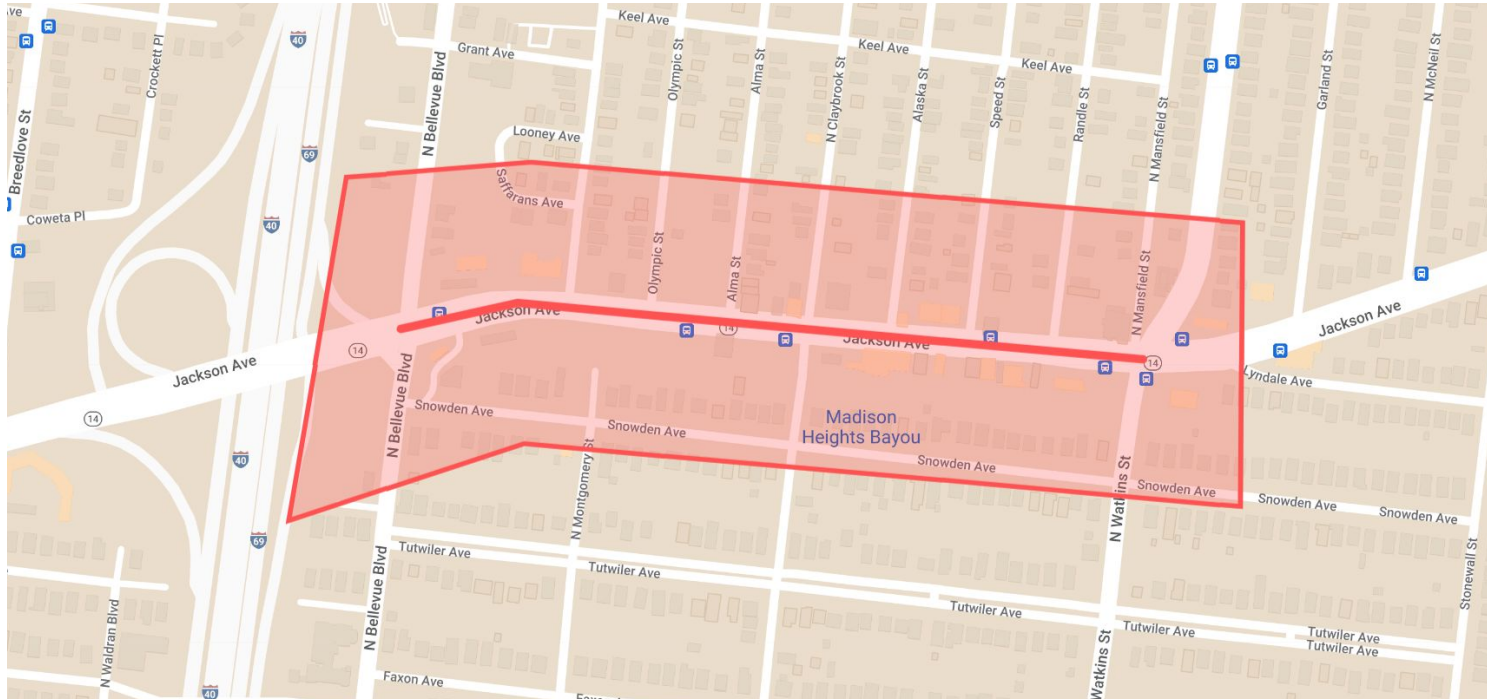
2nd Street Corridor

Chelsea to Pear

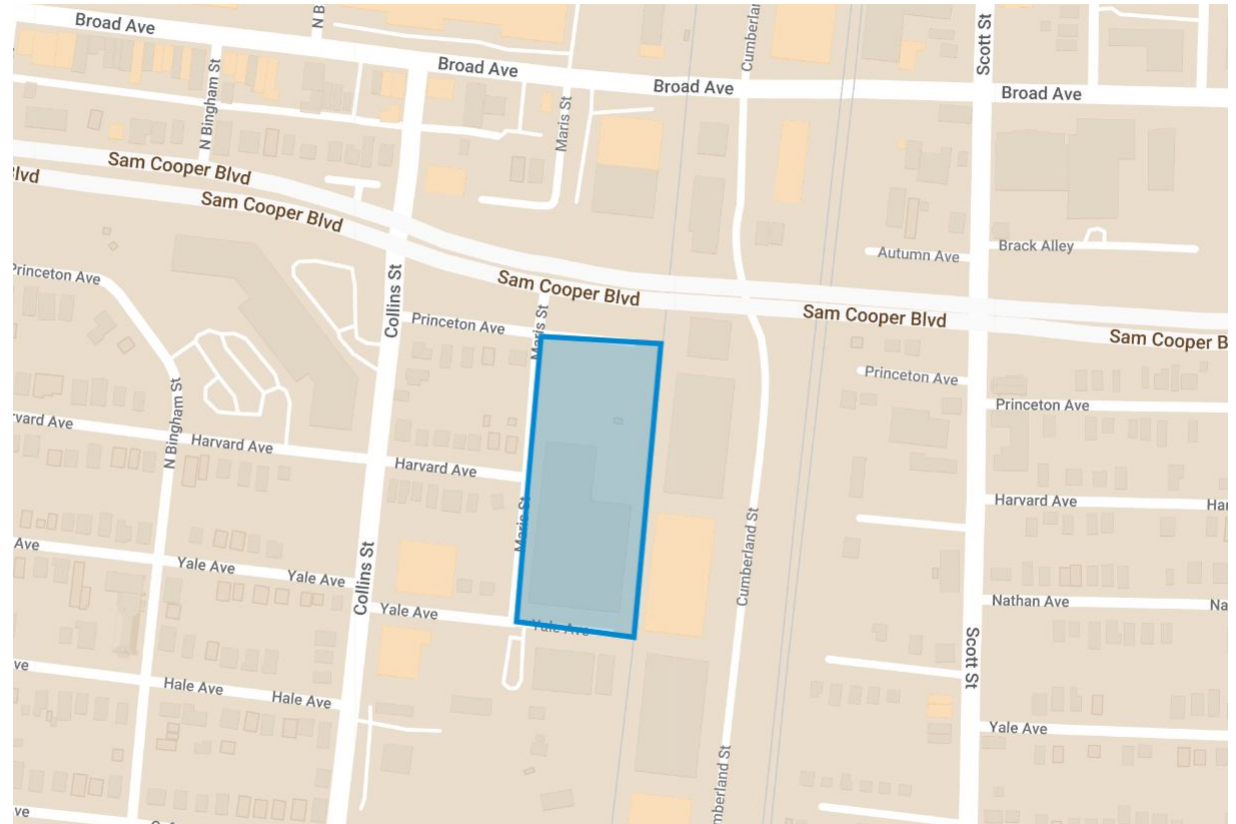


Jackson Corridor East

I-240 to Watkins

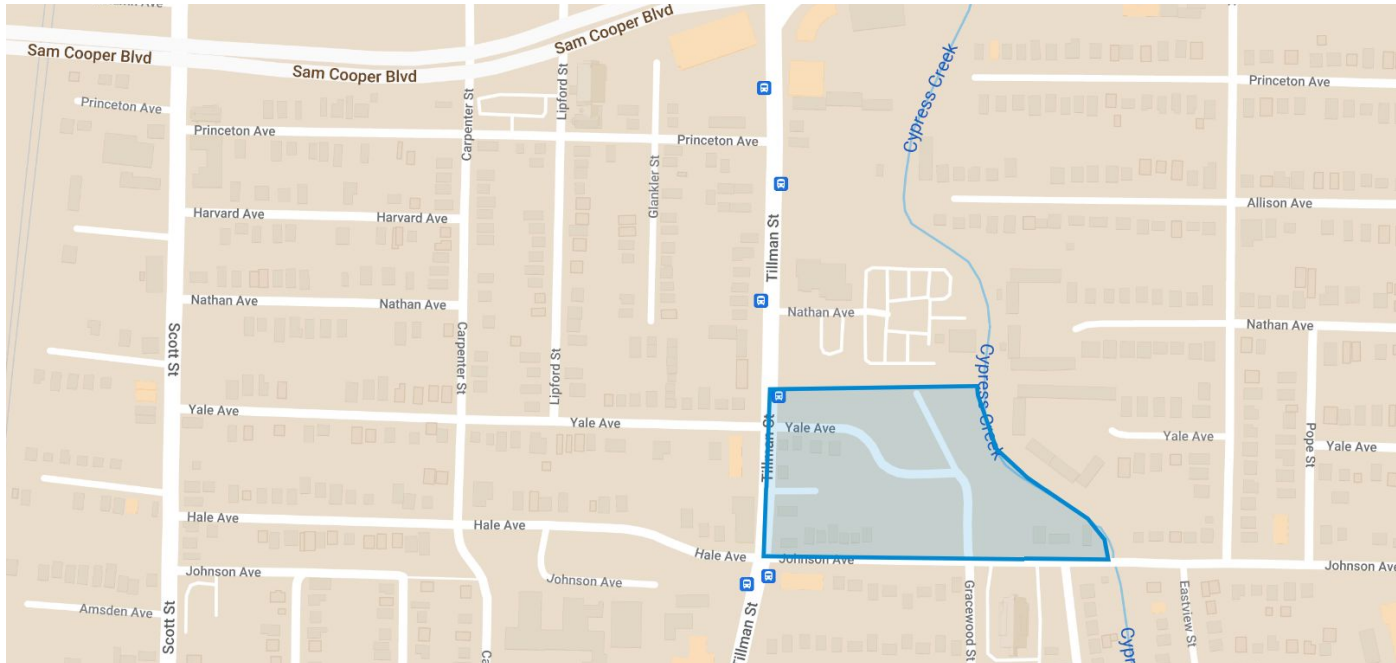


2690 Yale Ave BDC Business Hub

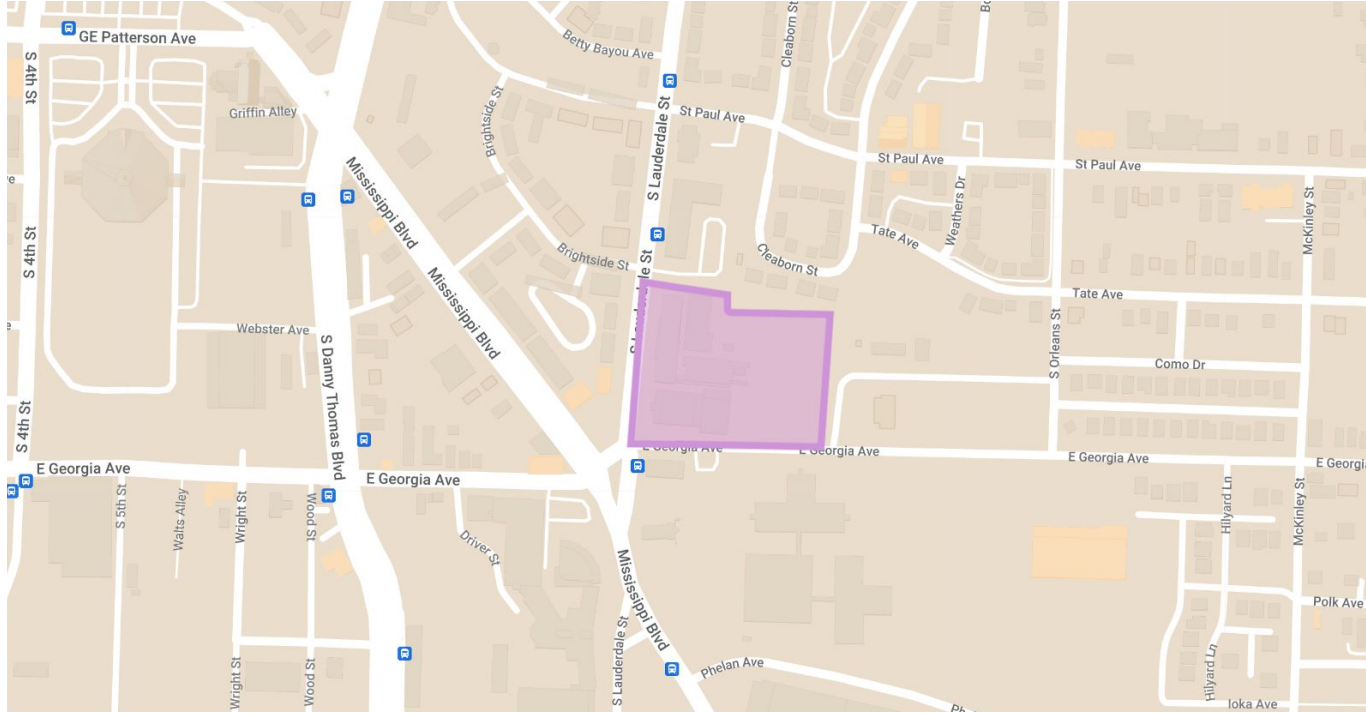


NE Corner of Johnson & Tillman

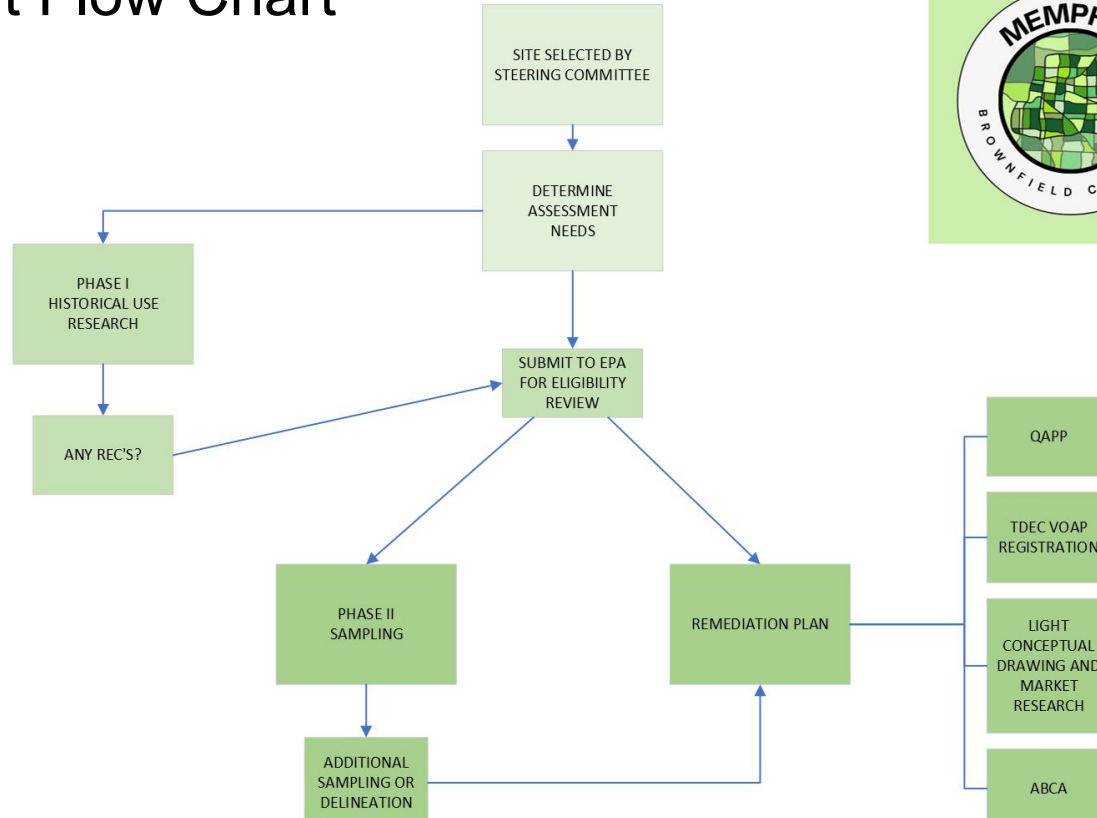
Land near Cypress Creek



620 South Lauderdale Street MLK Transition Academy (Porter)



Assessment Flow Chart



Coalition Advisory Council

Assists with inventory efforts, communicates with constituent communities, and to inform and engages in the overall brownfield assessment and redevelopment process. Proposes and discusses projects for involvement in grant program.

Meets quarterly.

Coalition Steering Committee

Guides the implementation of the Assessment Coalition grant. Takes input and discussion from advisory council, filters for prioritization, and votes on how to proceed. Makes recommendations for all related CRA action.

Meets twice quarterly.

Coalition Steering Committee Members

- City of Memphis and Shelby County Community Redevelopment Agency
- Klondike Smokey City CDC
- Binghampton Development Corporation
- Soulsville Foundation
- Community Liaisons
- The Works, Inc.
- Economic Development Growth Engine for Memphis & Shelby County (EDGE)
- Shelby County Landbank
- Greater Memphis Chamber
- Memphis City Housing and Community Development

Coalition Advisory Board Members

All Steering Committee Members Plus:

- Memphis City Engineering
- Memphis City Public Works
- Memphis Division of Planning & Development
- Shelby County Neighborhood & Economic Development
- Blight Authority of Memphis (BAM)
- International City/County Management Association [Technical Assistance]
- Tennessee Department of Environment & Conservation
- LISC Memphis
- Community LIFT
- ComCap Partners
- CAESER, University of Memphis
- Tom Currell
- Belz Enterprises
- Frank Smith, Inc

Membership open to additional interested stakeholders.

Community Liaisons

The four Community Liaisons are resident representatives and correspond to each target area to be assessed under this grant. Their role is to assist CRA with engaging residents to discuss assessment activities. Through the grant, liaisons are compensated for their time participating in engagement activities including attending Brownfield meetings, distributing flyers, and updating neighbors in each target area on assessment work.

Will announce all nominated liaisons by the end of the year.

Competitive Procurement

To be released late September

Grant Management: Request for Proposal (RFP) 30-day response time. Will choose one contracted consultant.

Environmental Consultants: Request for Qualifications (RFQ) 30-day response time. CRA is looking to create a pool of 3-5 consultants, offer master service agreements, and utilize task orders based on bidding within the pool. Weighted qualifications include experience, capacity, location of home office, and pricing.

Partnerships

U of M CAESER: GIS assistance, storymapping, creating framework for inventory map.

A story map is a web map that has been thoughtfully created, given context, and provided with supporting information so it becomes a stand-alone resource. It integrates maps, legends, text, photos, and video and provides functionality, such as swipe, pop-ups, and time sliders, that helps users explore this content.

Soulsville Charter School: Creation and deployment of a new Environmental Justice Curriculum for teens as a one-school pilot project. Promotion of EJ curriculum for replication elsewhere in the Memphis community.

Environmental justice (EJ) is the fair treatment and meaningful involvement of all people regardless of race, color, national origin, or income with respect to the development, implementation and enforcement of environmental laws, regulations and policies. Fair treatment means no group of people should bear a disproportionate share of the negative environmental consequences resulting from industrial, governmental and commercial operations or policies.

Meaningful involvement means:

- People have an opportunity to participate in decisions about activities that may affect their environment and/or health;
- The public's contribution can influence the regulatory agency's decision;
- Community concerns will be considered in the decision making process; and
- Decision makers will seek out and facilitate the involvement of those potentially affected.

Submit Potential Brownfield Sites for Consideration and Inventory:

<https://cramemphis.org/brownfields/>

Want to submit a potential Brownfield site to the Coalition?

Brownfield Contact Form

Fields marked with an * are required

Your Name / Organization / Agency *

Email Address *

Address of Site for Consideration *

Message (e.g. historic land use, upcoming development, any assessments or cleanup completed previously) *

Submit

Questions

Next Advisory Council Meeting:
Thurs, December 7
Location TBD

Contact

CRA

Emma Turri <emma.turri@cramemphis.org>

Vivian Ekstrom <vivian.ekstrom@cramemphis.org>

901-435-6992



TWI

Eric Story Neimeyer <eric@theworkscdc.org>

901-946-9675



EPA Brownfields Revolving Loan Fund

Advisory Council Meeting
September 14, 2023

What is a Brownfield?

As defined by the United States Environmental Protection Agency (EPA):

A brownfield is a property, the expansion, redevelopment, or reuse of which may be complicated by the presence or potential presence of a hazardous substance, pollutant, or contaminant.

Many commercial, industrial and even some residential properties may be environmentally contaminated due to past uses at the site.



EPA Brownfields Revolving Loan Fund (RLF)

RLF programs provide loans and subgrants to eligible entities **to carry out cleanup activities** at brownfield sites contaminated with hazardous substances and/or petroleum.

Grant performance period of five years.

\$1,000,000 total in the fund

As loans are repaid, fund is replenished to be used to make new loans.

RLF Info & Updates



ECONOMIC DEVELOPMENT
GROWTH ENGINE
FOR MEMPHIS & SHELBY COUNTY

Lead Applicant: Economic Development Growth Engine (EDGE)

Financial Committee will discuss projects as necessary and make decisions concerning projects and fund.

EDGE is currently engaged with EPA's technical assistance provider and working to get the RFP out to engage QEP/Grants Administrator

Questions

Next Advisory Council Meeting:
Thurs, December 7
Location TBD